

ALL WOOD CABINETS

"MR" Maple Recessed Cabinets



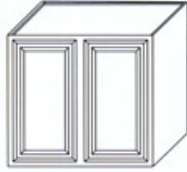
Features:

- ALL WOOD CONSTRUCTION • 1/2" PLYWOOD SIDES
- 3/4" SOLID MAPLE FACE FRAMES • EURO/CONCEALED HINGE
- 5/8" ADJUSTABLE PLYWOOD SHELVES • DRAWER BOX w/1/2" PLYWOOD SIDES
- EPOXY COATED DRAWER GLIDES • RECESSED PANEL MAPLE DOORS
- 4-1/2" ALL WOOD TOE KICKS

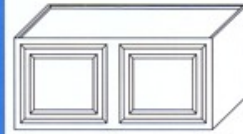
WALL CABINETS 12" DEEP



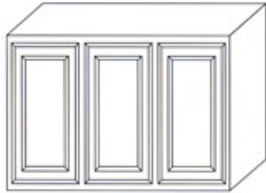
W 0930 W 1542
 W 0936 W 1830
 W 0942 W 1836
 W 1230 W 1824
 W 1236 W 1842
 W 1242 W 2130
 W 1530 W 2136
 W 1536 W 2142
 W 2430(Single door)



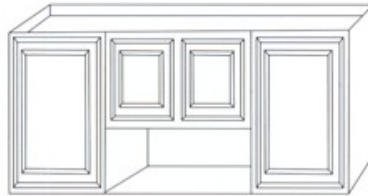
W 2430 W 2436 W 2442
 W 2730 W 2736 W 2742
 W 3030 W 3036 W 3042
 W 3330 W 3336 W 3342
 W 3630 W 3636 W 3642
 W 3930 W 3936 W 3942
 W 4230 W 4236 W 4242



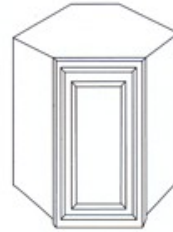
W 3012 W 3018
 W 3312 W 3318
 W 3612 W 3618
 W 2415 W 2424
 W 3015 W 3024
 W 3315 W 3324
 W 3615 W 3624
 W 2418 W 4224
 W361524(24" DEEP)
 W362424(24" DEEP)



W 4830



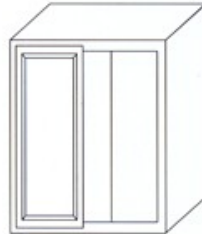
W 5430
 W 6030



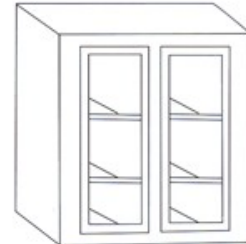
WDC 24" X 30"
 WDC 24" X 36"
 WDC 24" X 42"
 Wall Diagonal
 Corner



W 1230G
 W 1530G
 W 1830G

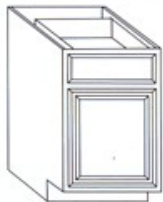


WB 2430
 WB 2730
 WB 3030
 WB 3630
 WB 2436
 WB 2736
 WB 3036
 WB 3636
 WB 2442
 WB 2742
 WB 3042
 WB 3642

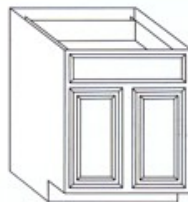


W 2730G
 W 3030G
 W 3630G

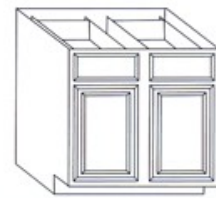
BASE CABINETS 34 - 1/2" HIGH & 24" DEEP



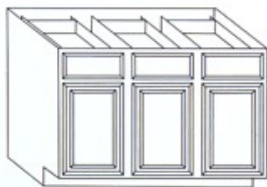
B 9
 B 12
 B 15
 B 18
 B 21
 B 24(Single door)



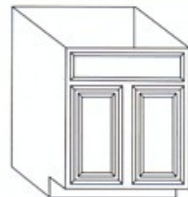
B 24
 B 27
 B 30



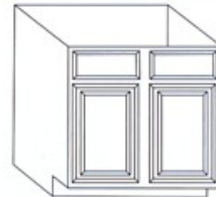
B 33
 B 36
 B 39
 B 42



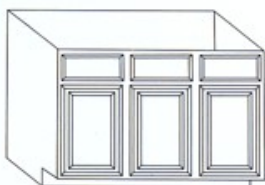
B 48



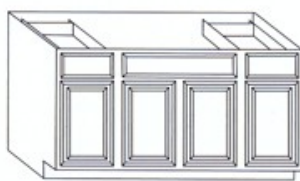
SB 24
 SB 27
 SB 30



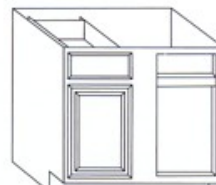
SB 33
 SB 36
 SB 42
 SB 42D
 (With Drawer)



SB 48
 SB 48D
 (With Drawer)

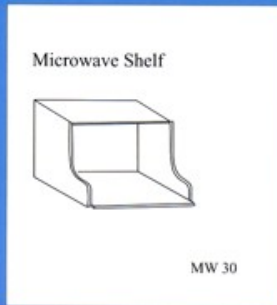
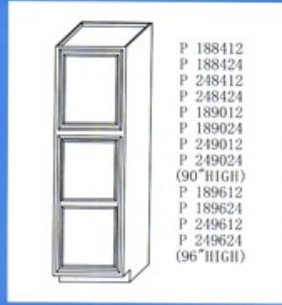


SB 54
 SB 60

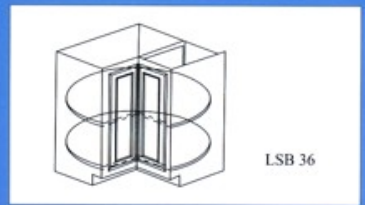
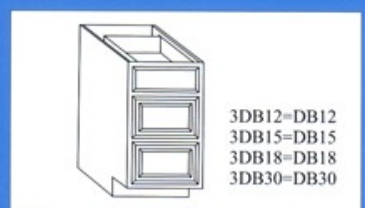


BB 24
 BB 30
 BB 36
 BB 42
 BB 48

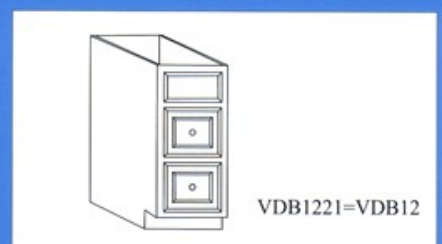
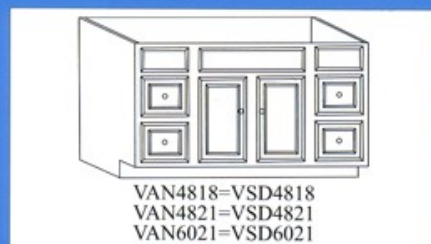
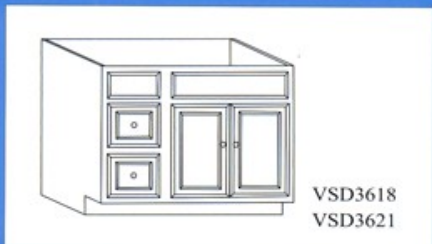
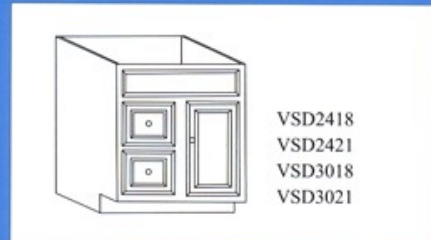
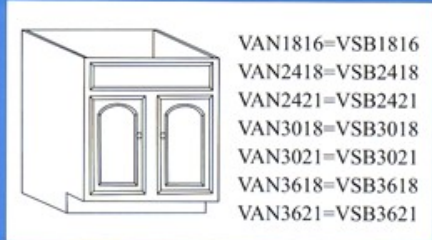
TALL CABINETS (84" HIGH)



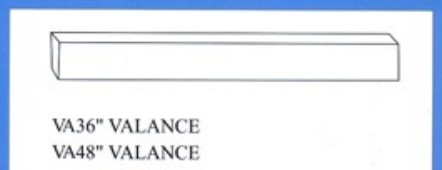
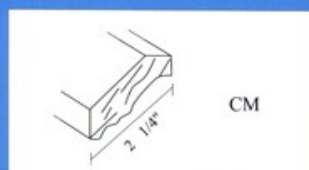
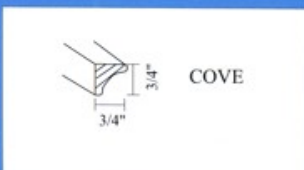
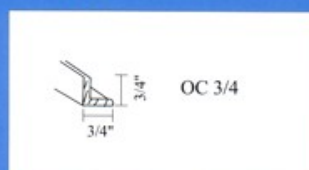
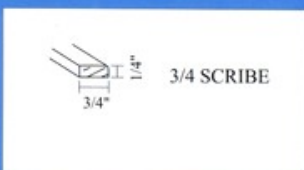
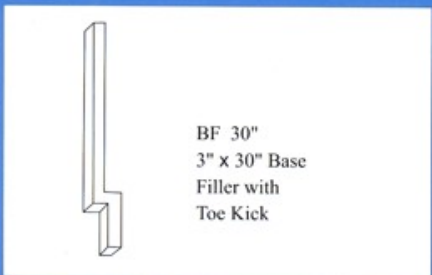
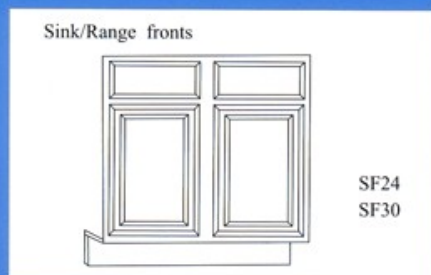
BASE CABINETS 34 - 1/2" HIGH & 24" DEEP



VANITIES



SPECIALTY UNITS



All Wood Vanities

