

#1
BEST VALUE
LIGHT OAK IN U.S.A.

SOLID LIGHT OAK CABINETS

For the Price of Compressed Wood Cabinets™

Hamca "H" Light OAK



Features

- 3/4" solid oak door frames.
- 1/2" plywood sides.
- Epoxy-coated drawer glides.
- Easy to install, with installation guide.
- Adjustable self-closing exposed or concealed hinges, and adjustable shelves.
- Cathedral raised panel doors for wall cabinets.
- No particle board anywhere.
- Constructed with all natural wood products.
- Wood toe kicks.
- Also offer factory pre-assemble cabinets.

HAMCA™ KITCHEN Brooklyn. NY 11219

LIGHT™
#1 IN U.S.A.

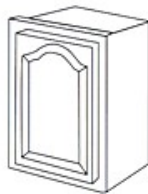
AFFORDABLE AND HIGH QUALITY
HAMCA™ KITCHEN
BEST VALUE



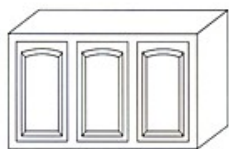
HAMCA™ LIGHT OAK

NATURAL WOOD CABINETS

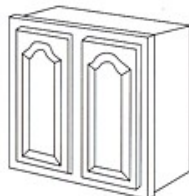
WALL CABINETS 12" DEEP



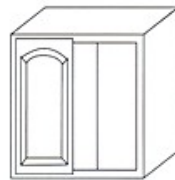
W1824
W0930
W1230
W1530
W1830
W2130



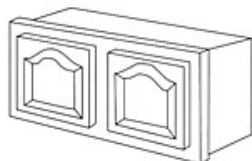
W 4830



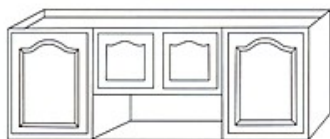
W2430
W2730
W3030
W3330
W3630
W4230



WB 2730
Wall Blind
Corner
Reversible
Pull Distance
0" to 2"



W2415 W2424
W3012 W3018
W3015 W3024
W3312 W3318
W3315 W3324
W3612 W3618
W3615 W3624

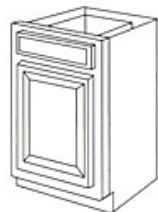


W6030

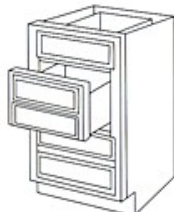


WDC 24" x 30"
Wall Diagonal
Corner

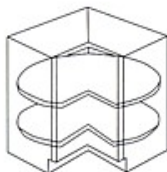
BASE CABINETS 34 - 1/2" HIGH & 24" DEEP



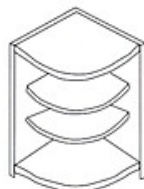
B9
B12
B15
B18
B21



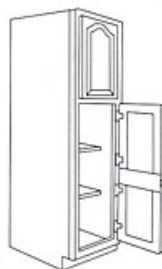
DB15"
DB18"
Drawer
Base



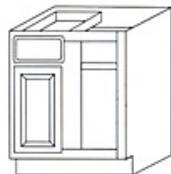
LSB36
Lazy
Susan
Base



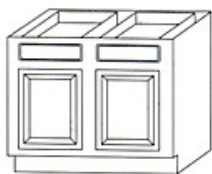
CS30
Corner
Shelf



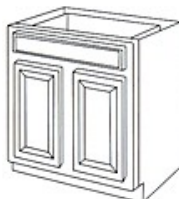
P1884
Three-Door pantry



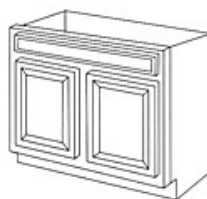
RBC4347=BB36
Reversible
Base Blind
Corner
Pull Distance
43" to 47"



B 33
B 36
B 42



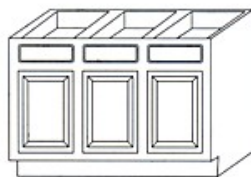
B24
B27
B30



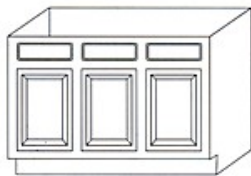
SB30"
SINK BASE



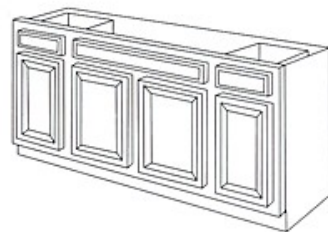
SB 36
SB 42



B 48

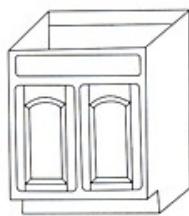


SB 48

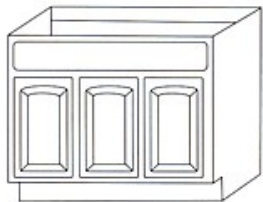


SB60"
Sink
Base

Vanity Cabinets



VAN 1816
VAN 2418
VAN 2421
VAN 3018
VAN 3021



VAN 3621
VAN 3618

WF30" 3"X30" Wall Filler



TKF8"
Finished 8" Toe Kick



SV36" Curved Valance
SV48" Curved Valance



VA36" Valance
VA48" Valance



36 CSF
36" Corner Sink Front



BF30"
3"x30" Base
Filler with
Toe Kick

